



**SILVER  
TERRACES**

*2 & 3 Bedroom Apartments, on  
Terrace Close, off Rhapta Road*

*The Ideal Home to Balance  
Life, Work & Play*





## *The Location*

- Conveniently located on Terrace Close, Off Rhapta Rd, Westlands, Nairobi
- 1 Minute to Chandarana Supermarket
- 5 minutes to Art Caffè
- 10 minutes to Westgate
- 15 minutes to Nairobi CBD
- 15 minutes to Nairobi Arboretum
- 20 minutes to Upperhill





*Spacious Open  
Plan Layouts*



*Large windows for  
natural lighting*





• *Large Bedrooms*

• *Luxurious Hansgrohe & Duravit Sanitary Fittings*

• *Spacious Balconies with Stunning Views*

• *Integrated Bosch Kitchen Appliances*

*Comfort Personified*



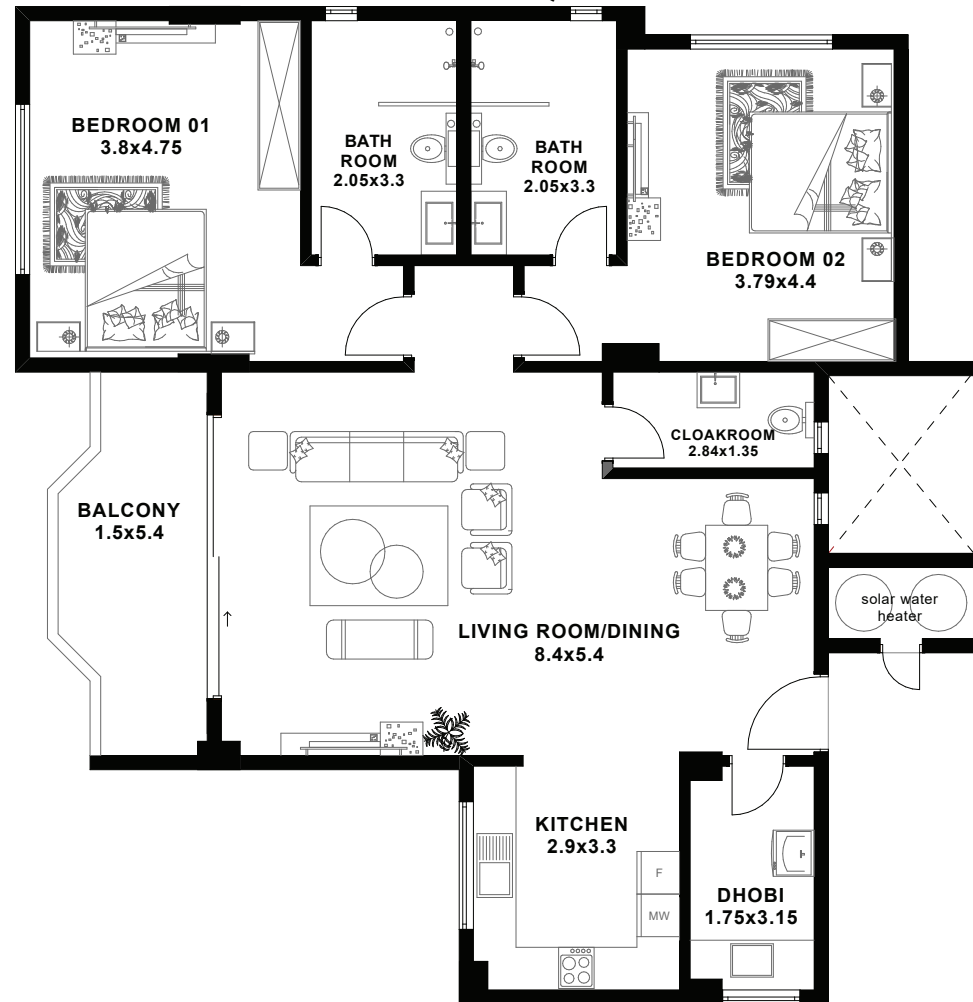
## *The Amenities*

- Grand Entrance Lobby
- 2 High-Speed Elevators
- Rooftop Garden
- Ample Parking
- On-site Borehole
- Solar Hot Water in All Bathrooms
- Full Power Backup Generator
- Security Cameras and Access Controls
- Infinity Rooftop Heated Swimming Pool
- Fully Equipped Gym
- Steam Room



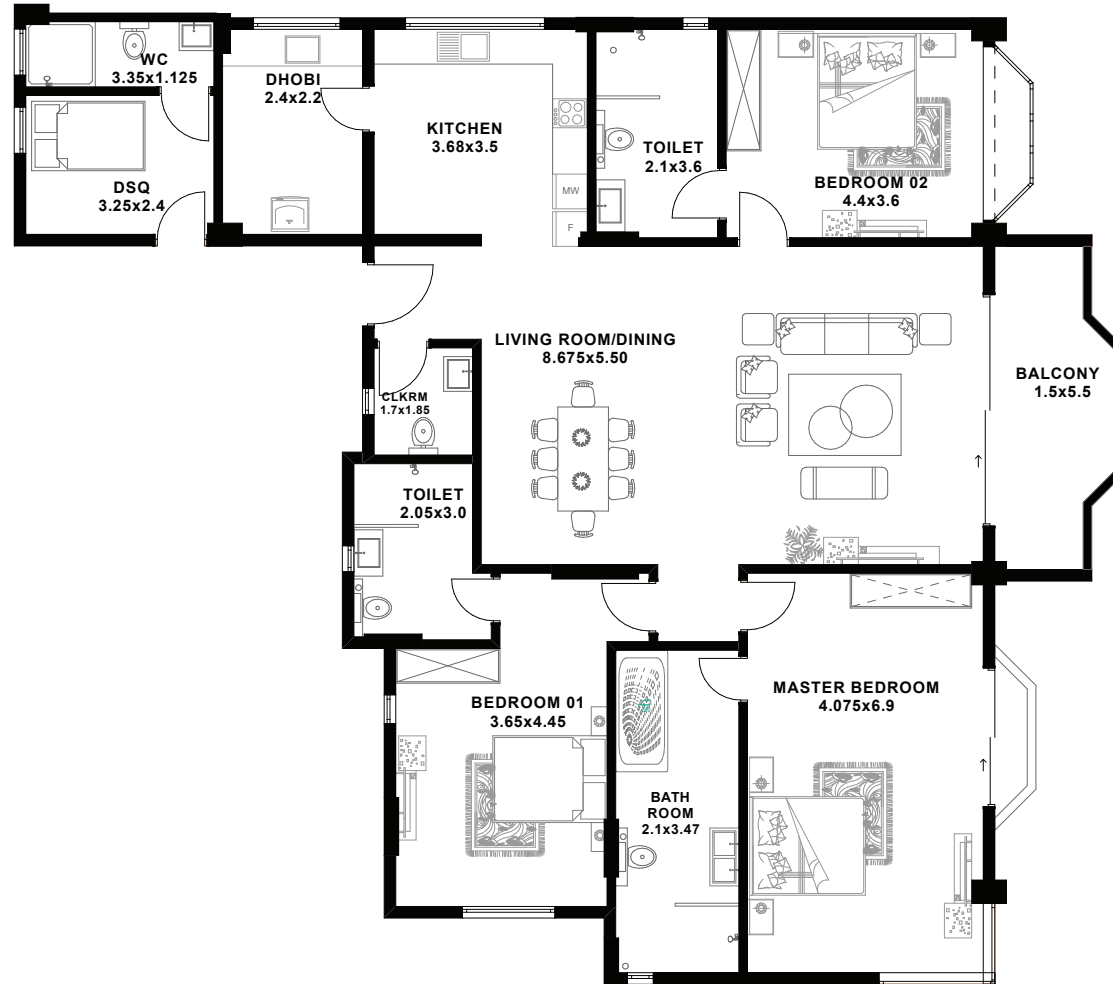
# Typical 2 Bedroom Apartment

**AREA - 154 SQM**



# Typical 3 Bedroom Apartment With DSQ

**AREA - 238SQM**





*For enquiries contact us:*

Tel: 0731 286 286, 0700 004449  
e: [info@elegantproperties.co.ke](mailto:info@elegantproperties.co.ke) |  
w: [elegantproperties.co.ke](http://elegantproperties.co.ke)

*A Prestigious Development By:*

